



Installation Configurator

Setup procedure for Print&Share projects

Intro The installation set of Print&Share can be adapted for projects. Specific settings can be set during the installation procedures. These specific settings or default values will be collected by using another program called "Installation Configurator".

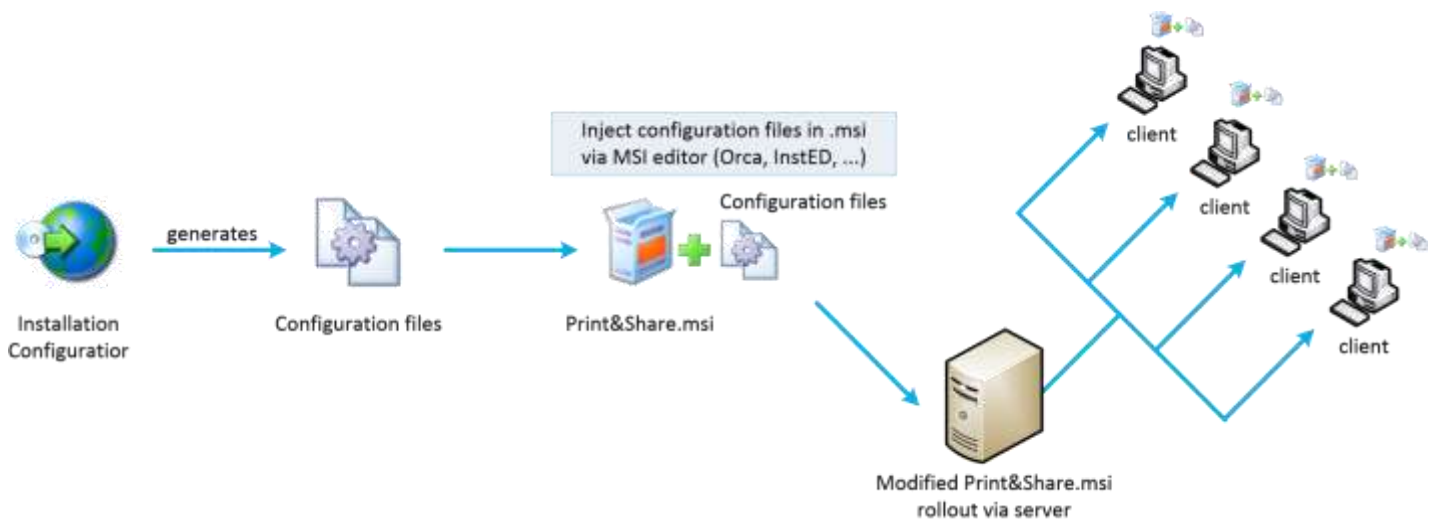
The collection of these default values will result in two files.

These two files can be injected in the standard installation set of Print&Share. Hereby, a specific installation set (MSI) will be created for the project.

Installation set You can download the standard installation set of Print&Share from URL: www.printandshare.info.

This installation set will be changed by some default values for the project.

Schematic process overview



1. Define the default settings for Print&Share via the Installation Configurator.
2. Save the settings. This will generate two configuration files (an .ini and an .xml file)
3. Inject the configuration files into the Print&Share.msi file using an MSI editor (e.g. Orca, instead, ...). This results in a new .msi file of Print&Share with default settings.
4. Rollout this new .msi file to your clients.

Installation Configurator

Download

The Installation Configurator is a utility to collect specific settings.

You can download the Installation Configurator from the URL:
www.printandshare.info.

By using a hyperlink you can download the software.

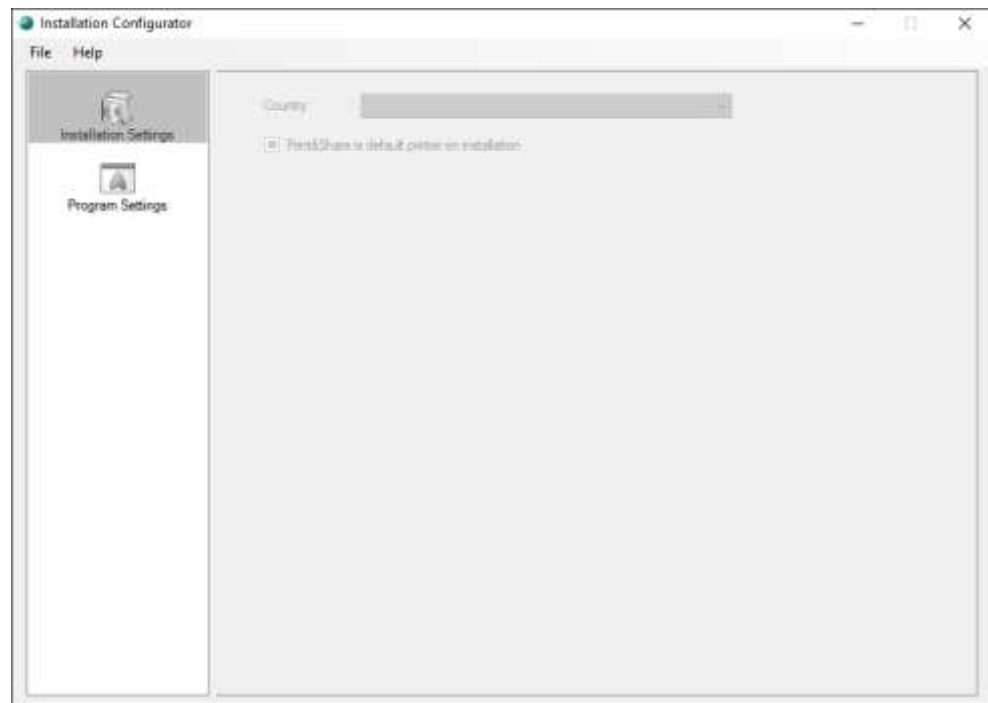
Install the software.

Usage

Start the Installation Configurator via the Windows **[start]**-button, **[All Programs], [Winking]**.

For Windows 8, 8.1 or 10: Press the **[Windows-key]** and type *Installation Configurator*.

After starting the Installation Configurator you obtain the following dialog:



Click on the menu **[File], [New]**.

Installation Settings

In the **[Installation Settings]** choose your country.

Program Settings

In the dialog of group **[Program Settings]** you will find four tabs.

Company and User Information

The screenshot shows the 'Company and User Information' tab. It contains the following sections and fields:

- Company:** Company name (text field)
- Company address:** Address (text field), Postcode (text field), City (text field), Country (dropdown menu, currently set to 'Belgium')
- Contact details:** Company phone no. (text field), Company fax no. (text field), Company email (text field), Company website (text field)
- User:** Your name (text field), Department (text field), Job position (text field)
- User contact details:** Phone no. (text field), Fax no. (text field), Your email address (text field)
- Company logo:** A large empty text area with 'Browse' and 'OK' buttons.
- Purchase information:** Reference (text field)
- Yes I want to receive emails from Ricoh

Use all fields to set your customer contact information.

Reference

The field **[Reference]** has to contain the **Reference** code. Later, with this code you will obtain an automatic activation for each Print&Share user of the project.

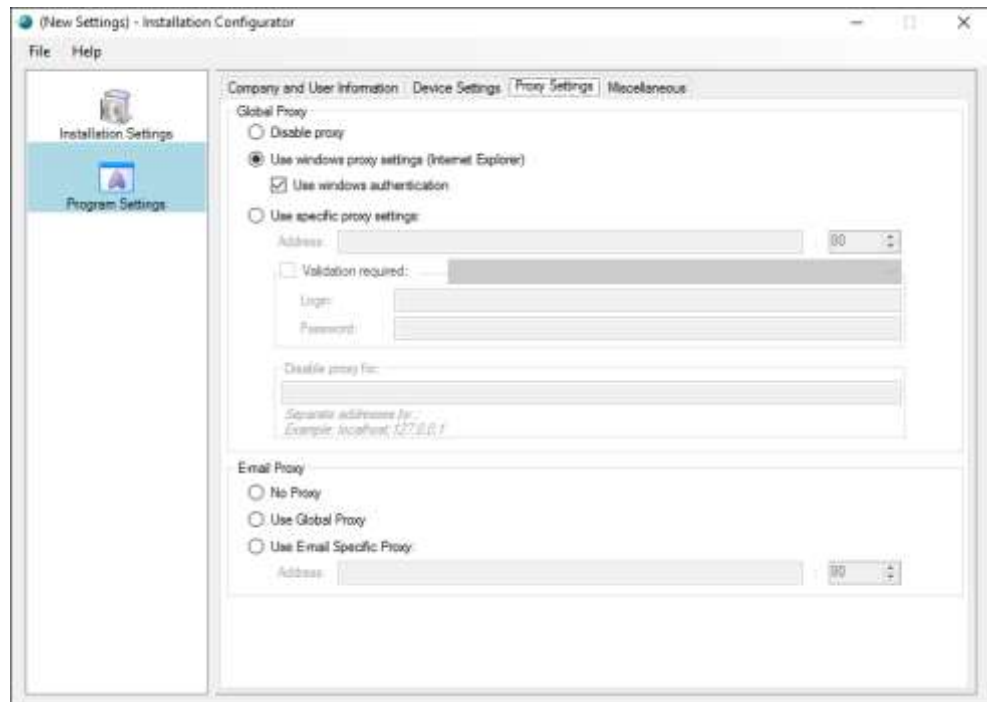
Device Settings

The screenshot shows the 'Device Settings' tab. It contains the following sections and fields:

- Email:** Connection (dropdown menu, currently set to 'SMTP')
- Use SMTP Server
 - SMTP Server (text field)
 - SMTP Login (text field)
 - SMTP Password (text field)
 - SMTP Port (spin box, currently set to 25)
- Use Pickup Folder/Use Pickup Folder
 - Pickup Folder (text field, currently set to '[SMTP_PickupDir]') with 'OK' and 'Cancel' buttons.
- Printer:** Device (dropdown menu)
- Fax:** Device (dropdown menu)

Use the fields of the groups **Email**, **Printer** and **Fax** to set you default device settings of the project configuration.

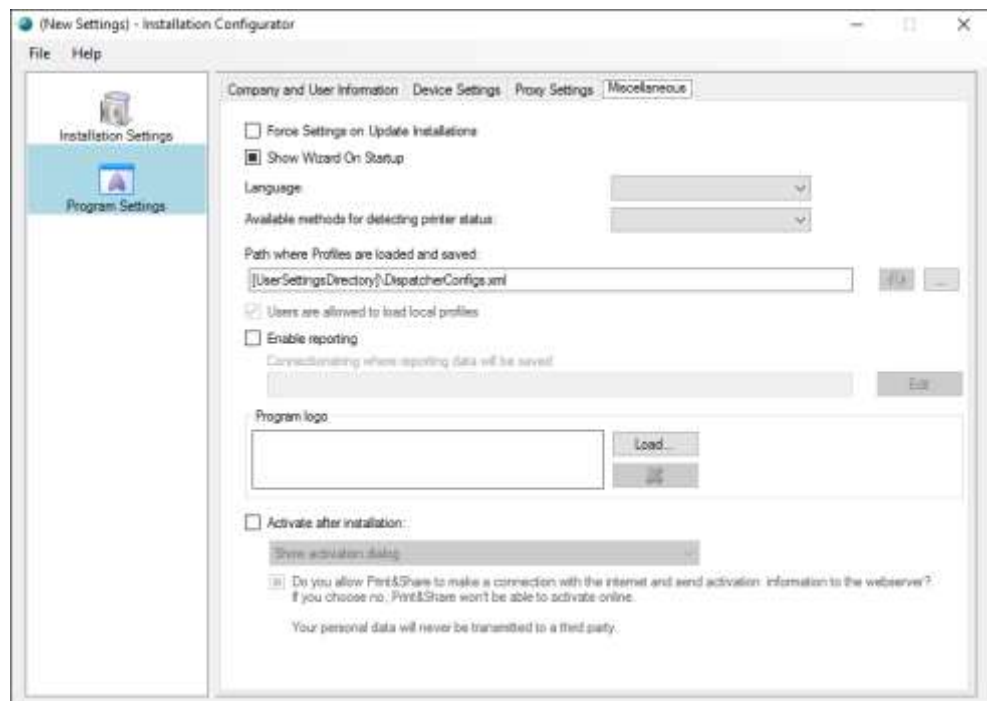
Proxy Settings



Use the fields of the groups **Global Proxy** and **Email Proxy** to set your default internet connection settings.

Note: Print&Share version 2.8.3.25 or higher needed for the specific Global Proxy settings.

Miscellaneous



Activate the checkbox **[Force Settings on Update Installations]** to overwrite during updates. The checkbox can also be active for the initial installation.

Choose the set the **[Show Wizard On Startup]** active or inactive.

The **[Language]** option is the language of Print&Share, not the installation language. *In Print&Share a user can always change the language via a right-mouse click on the tray icon and selecting the Language option.*

[Available methods for detecting printer status] give you the option to enable or disable the SNMP and WMI connection.

*In Print&Share this is located in the **[General Configuration]** > **[General Settings]**.*

The field **[Path where Profiles are loaded and saved]** can be individual different for each user which is default or changed to a common shared network path. A bitmap of 300x50 pixels can also be uploaded by **[Program logo]**.

With **Enable reporting** active reporting data will be saved to a SQL database.

The option **[Activate after install]** enables you to activate Print&Share automatically or by showing the activation dialog.

This Activation option will only work if you agree that Print&Share makes a connection to the internet and if a **[Reference]** code located at the **[Company and User Information]**-tab page is filled in.

Save

Click on the menu **[File]** and the item **[Save As]** to save your settings. Choose a folder to save your configuration files.

The created files are **PreInit.ini** and **PreInit.Program.xml**.

Insert your default values in the setup set

Intro By using the Installation Configurator you obtained two files which you saved in a certain folder.

With this procedure you can inject you two files in the standard installation set. In this way you create a specific installation set for your project.

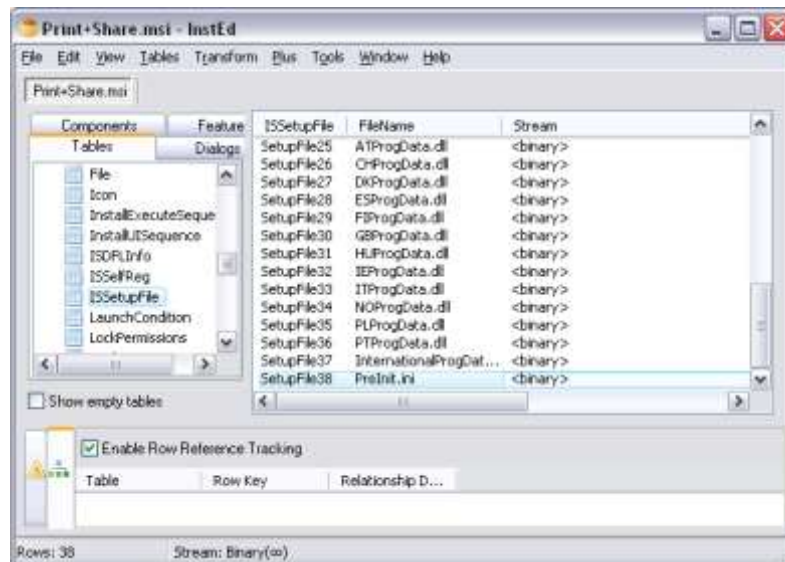
Inject your files in the MSI To inject the files PreInit.ini and PreInit.Program.xml in an MSI-set you can use free MSI editors.

Well known MSI editors are Orca and InstED.

In this document we will use InstED.

You can download the MSI-editor via the URL www.instedit.com.

- InstED**
1. Start the application InstED.
 2. Open in the application the file **Print+Share.msi**.
 3. Select in the menu **[Edit]** the option **[Find]** and search for the file **Preinit.ini**.
 4. Double click on the **<binary>** value in the **Stream** column.



5. Select the **[...]** button and browse to your PreInit.ini file which you have to insert in the Print+Share MSI.



6. Click on the **[←]** button to inject the file in the Print+Share.MSI.

7. Repeat steps 3 to 6 for the second file **PreInit.Program.xml**.

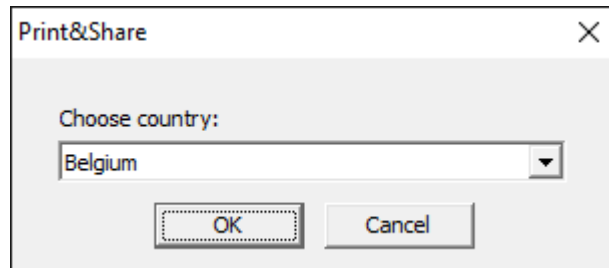
8. Save the MSI-file.

From now on, you have a complete and a specific installation-set for you project with Print&Share.

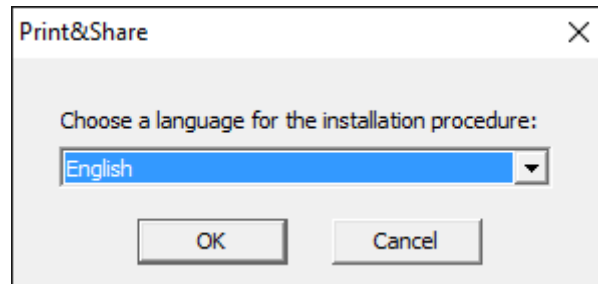
The Print&Share installation

Intro In this chapter you will have some information about the dialogs of installation procedure.

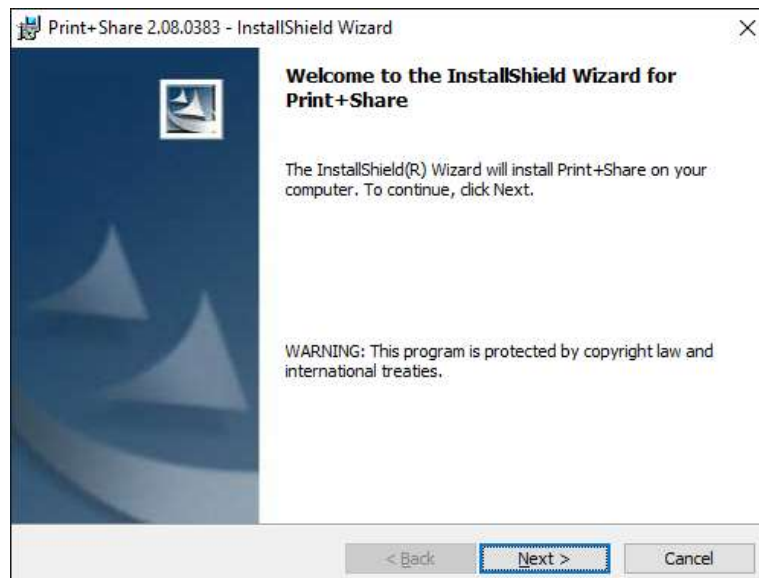
Procedure Please follow the instructions on the following dialogs of the installation procedure.



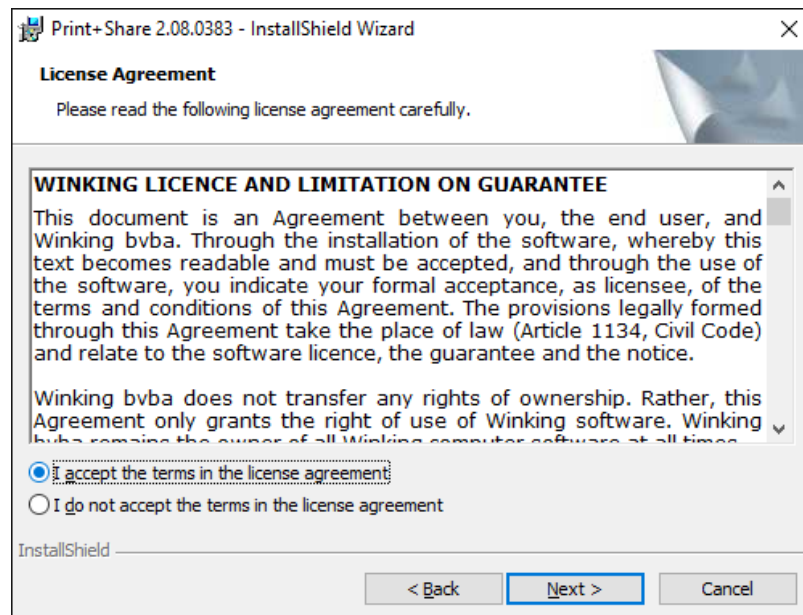
Choose your country and click on **[OK]**.



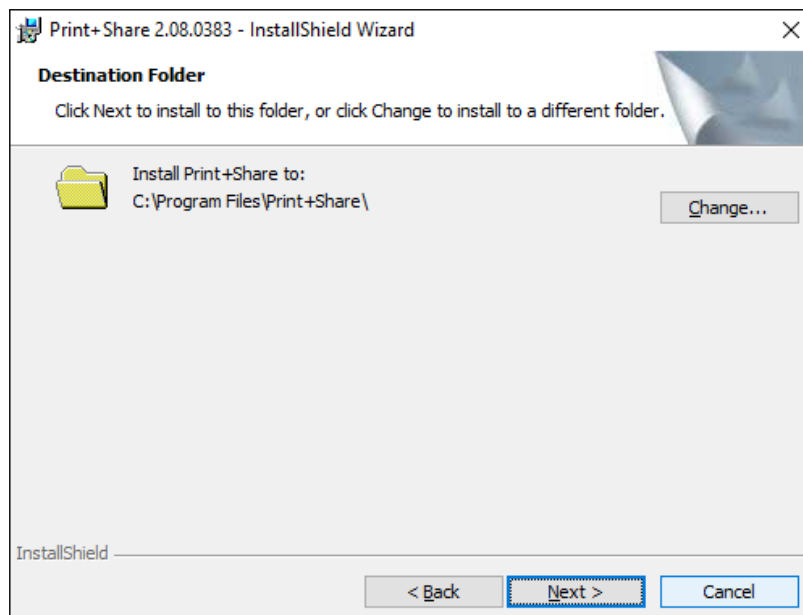
Select the language of the installation procedure and click on **[OK]**.



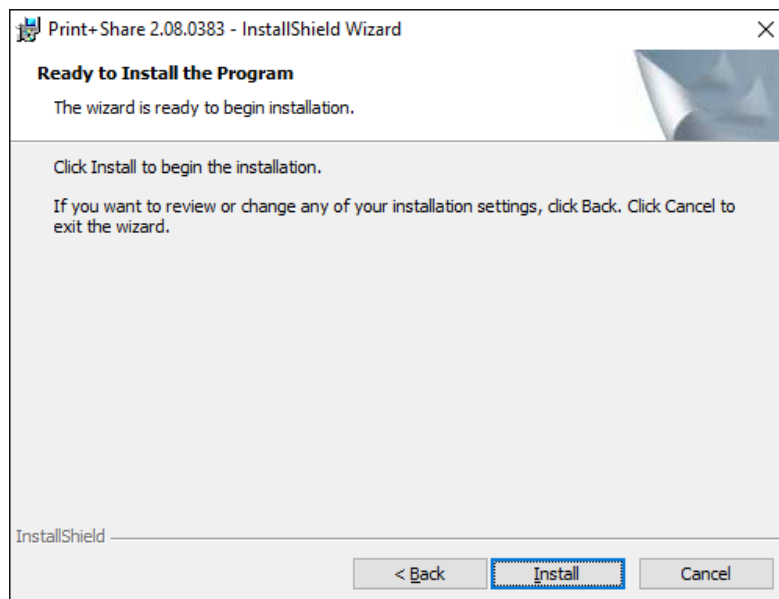
Click on the **[Next]** button for the next steps after the Welcome dialog.



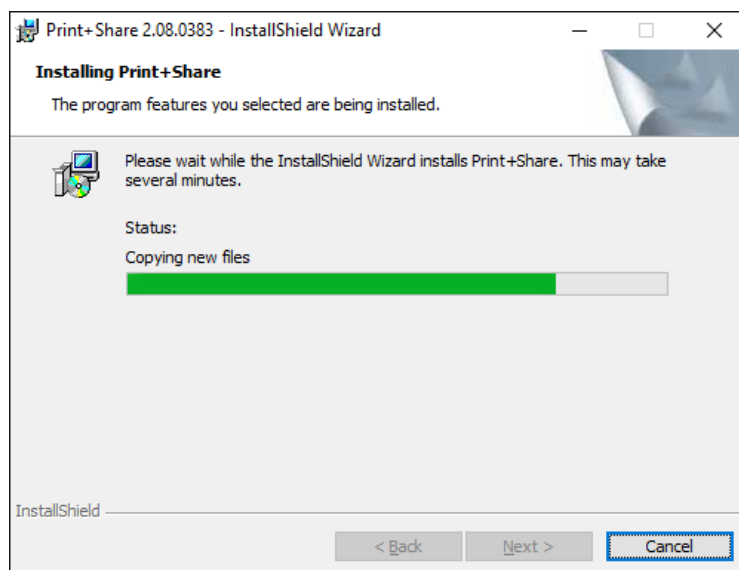
Read the license agreement carefully and accept before you can continue.



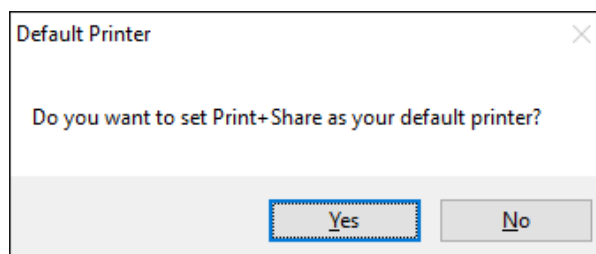
Accept the default installation folder or choose another folder. Click on the button **[Next]**.



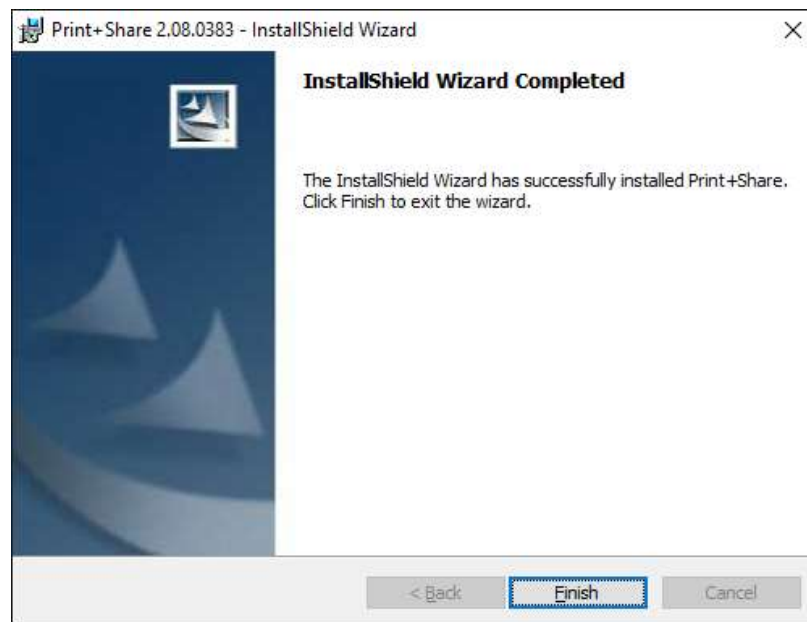
By clicking on the **[Install]** button the Print&Share files will be installed.



Wait until the next dialog.



Click on **[Yes]** to use Print&Share as your default printer.



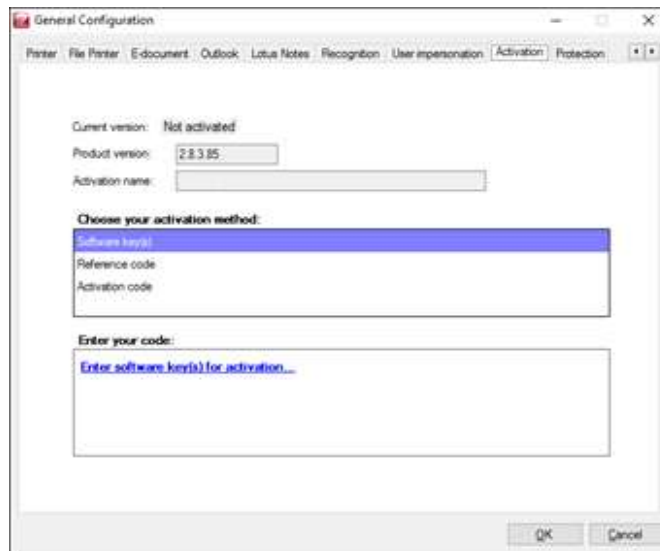
By clicking on the **[Finish]**-button in this dialog you will finish the installation procedure.

Activation

Intro The installation procedure will automatically start a dialog which you can use to activate Print&Share for all users.

Activation In the next dialog the user will see the company name of the project which you inserted by the Installation Configurator.

The reference code will also appear by default. Also this code was set by the Installation Configurator.

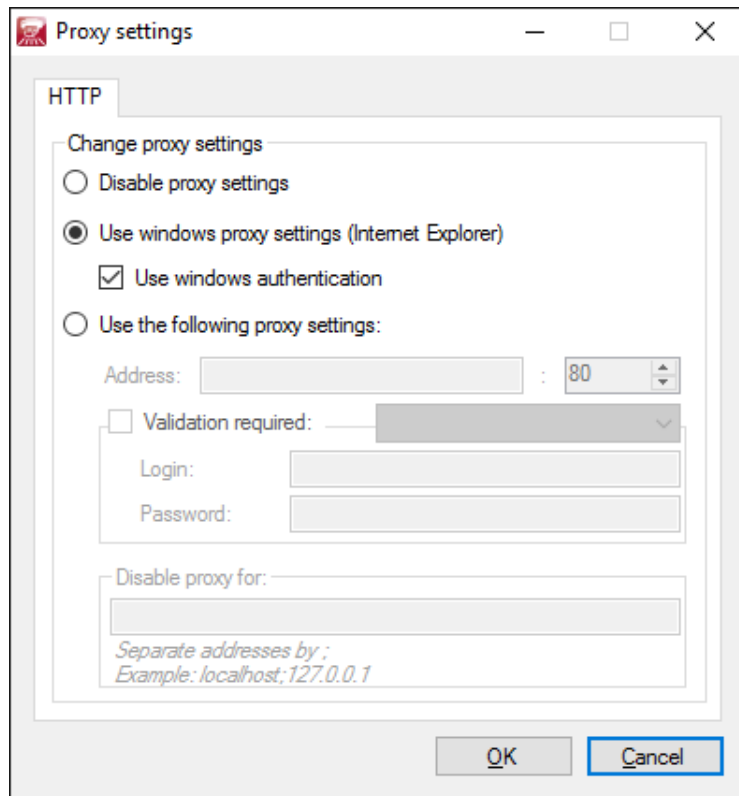


Click on the button **[Register]**. By this action the software will communicate with the web service and will activate automatically.

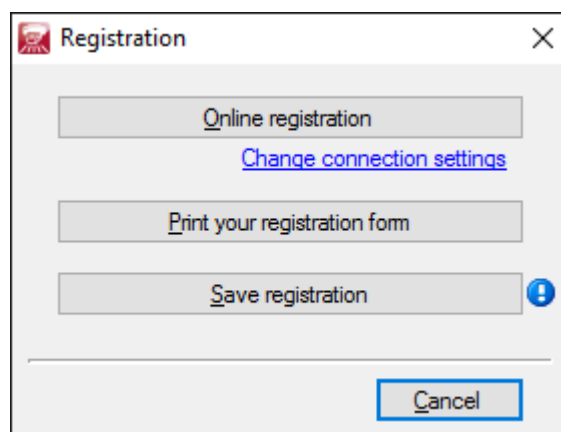
Communication problems

If an internet connection problem occurs during the communication with the registration/activation web service, Print&Share will check the error message.

If error message 407 occurs, which is related to proxy, a new dialog will appear to insert these settings.



If there is no internet connection you obtain this standard dialog.



Extra information

Quiet installation

To do a quiet installation of Print&Share it is possible by executing the following command at the command prompt:

```
Msiexec.exe /I [Print&Share msi location] /quiet  
Transforms=1033.mst REBOOT=ReallySuppress ISSETUPDRIVEN=1  
PROGDATAFILE=[Country Code]ProgData.dll
```

Parameters:

- **[Country Code]** is the 2 character iso code of a country wherefore Print&Share must be installed.
When a country code is not found, the default language will be used (English).
 - **[Print&Share msi location]** is the location where you find the Print&Share msi.
-

Example:

To install Print&Share from [\\192.168.0.300\Programs\PrintShare.msi](http://192.168.0.300/Programs/PrintShare.msi) in **Belgium** use this command:

```
Msiexec.exe /I "\\192.168.0.300\Programs\PrintShare.msi" /quiet  
Transforms=1033.mst REBOOT=ReallySuppress ISSETUPDRIVEN=1  
PROGDATAFILE=BEProgData.dll
```

Designed by Winking bvba, Belgium.

www.winking.be

WINKING**Manual**

v1.0.0.7 (2016-05-26)

Copyright

Copyright © 2016 by Winking bvba, BE0443.500.133, Belgium.

All rights reserved. No part of this publication may be reproduced, stored in a retrieval system, or transmitted, in any form, or by any means, electronic, mechanical, photocopying, recording, or otherwise, without the prior consent of the publisher. Printed in Belgium.

Trademarks

Winking is a registered trademark of Winking bvba.

OPTIsend is a registered trademark of Gerdi Staelens.

Ricoh is a registered trademark of the Ricoh Corporation Ltd.

Print&Share is a brand name.

Ricoh is the exclusive distributor of Print&Share software.

Windows is a trademark of the Microsoft Corporation.

All other brand and/or product names are trademarks of their respective owners.
